



LEMBARCADÈRE

Réservoir d'évènements

2022 CSR STATEMENT



— INTRODUCTION

At L'Embarcadère, around the two entrepreneurial sisters, bustles an energetic and friendly team, committed to reducing the ecological footprint of events.

With more than 150 events per year and the warm welcome of more than 40,000 participants, L'Embarcadère is a key eco-responsible venue in Lyon.

As the Event answers the social need to meet, communicate and create, we are convinced that it is a great vehicle to raise awareness about environmental issues. At a time when the challenge must be met, L'Embarcadère offers the stature of a committed place, involved by your side in the creation of low-impact events.

Our solutions apply to every stage of your event: preparation, running, closing. Thanks to our concrete solutions, optimize your events and minimize your impact for an eco-responsible event.

We believe its all about the process, not about the destination. Discover what our choices look like today, and feel free to suggest what they could look like tomorrow.



— 6 OBJECTIVES TO OUR CSR APPROACH



LIMIT THE ECOLOGICAL
FOOTPRINT OF TRANSPORT



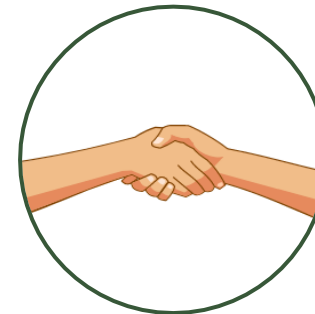
LIMIT CONSUMPTION



REDUCE, SORT AND
RECOVER WASTE



FAVORING SUSTAINABLE
CATERING



ACT TOGETHER



COMMUNICATE ON
SUSTAINABLE DEVELOPMENT
ISSUES



— REDUCING THE FOOTPRINT OF EVENTS AT EVERY STEP

PLANNING
Upstream of your event, a whole range of actions to reduce the CSR impact of an event as soon as possible.

CONDUCT
You may not suspect all the existing solutions to reduce the footprint of your event. We accompany you and multiply the actions.



CLOSING
It is also after and beyond your event that L'Embarcadère is committed. Sensitive to LCA*, our approach is continuing in an optimal way.

*LCA: Life cycle assessment



— LIMIT THE ECOLOGICAL FOOTPRINT OF TRANSPORT



THE EMBARCADERE IS A VENUE LOCATED IN THE HEART OF LYON:

Limit your transportation, those of service providers and participants.



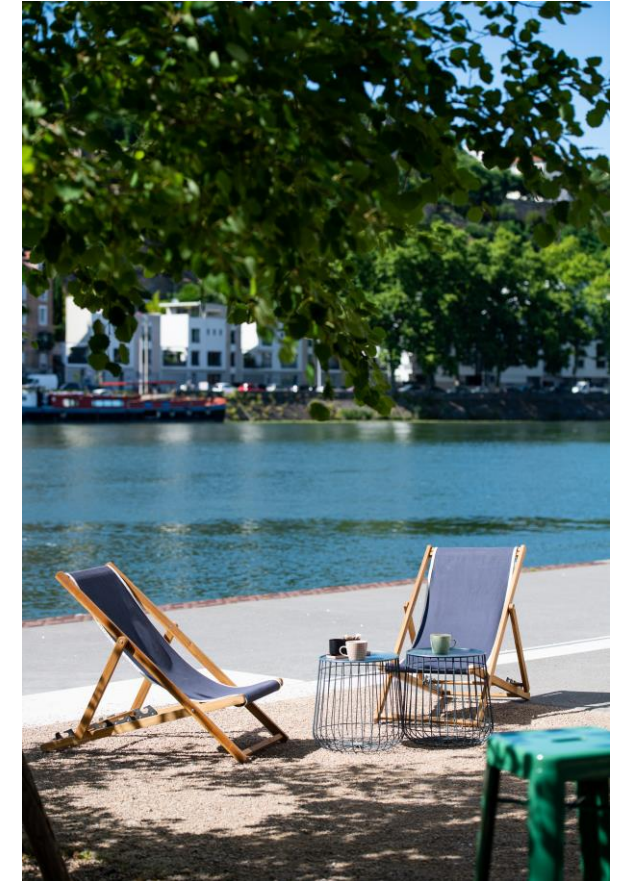
NEARBY HOTELS:

Help your participants with their organization : we provide you with a wide choice of solutions in the immediate vicinity.



ACCESSIBLE BY PUBLIC TRANSPORT:

L'Embarcadère is ideally located, very close to the Perrache transport hub (SNCF station, Metro A, Bus, Tram 1 & 2) and less than 5 minutes away from the Ste Blandine tram station. Note that in Lyon, 70% of public transport is electric! For the rest, there is carpooling!





— LIMIT THE ECOLOGICAL FOOTPRINT OF TRANSPORT

ACCESSIBLE VIA ENVIRONMENT FRIENDLY TRANSPORT:



The location benefits from the docks & facilities along the Saône, facilitating soft transport: walking, cycling, vélo'V, scooter, rollerblading, water taxi.

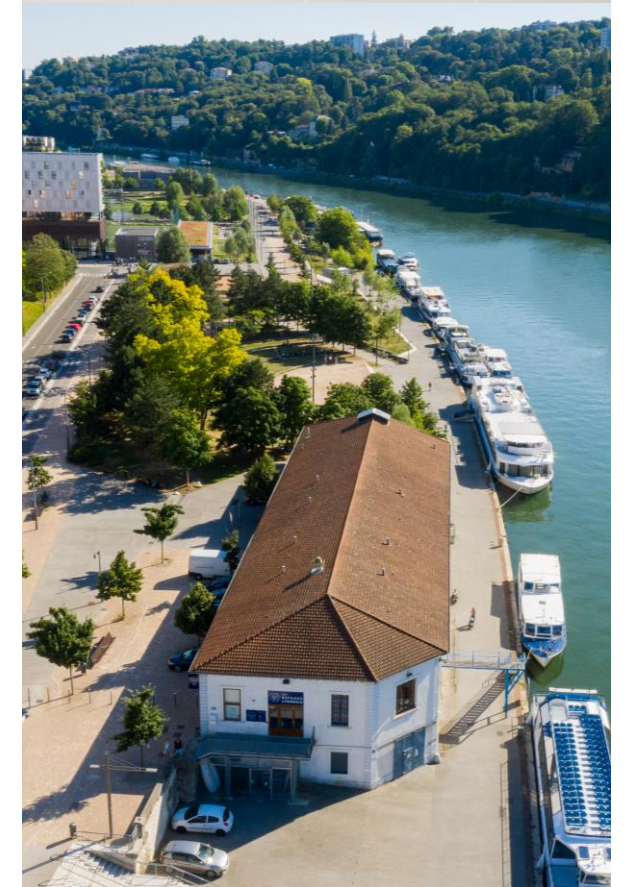
L'EMBARCADERE LIMITS AND STREAMLINES ITS LOGISTICS:



Short supply chain. Nearly 70% of our suppliers are located within 30 km : our local commitment is an important aspect of our CSR approach. It was even one of the three pillars of ReStart, the upmarket project that led l'Embarcadère in 2022.



We invite our customers to optimize logistics in two stages: delivery and collection, thus short cutting CO2.





— LIMIT CONSUMPTION

CHOOSE TO REDUCE BEFORE ALL:



At all levels, we commit. The consumption of water, soap and hand towels is controlled thanks to the installation of economical taps, dispensers and automatic flushes.



Our technical teams optimize the use of batteries with rechargeable devices.



We provide our customers with 3 customizable and therefore reusable reception terminals - no need to order dedicated stands!



The team takes care of placing orders for your breakfasts and breaks to plan the quantities as close as possible to real needs and thus limit food waste.





— LIMIT CONSUMPTION

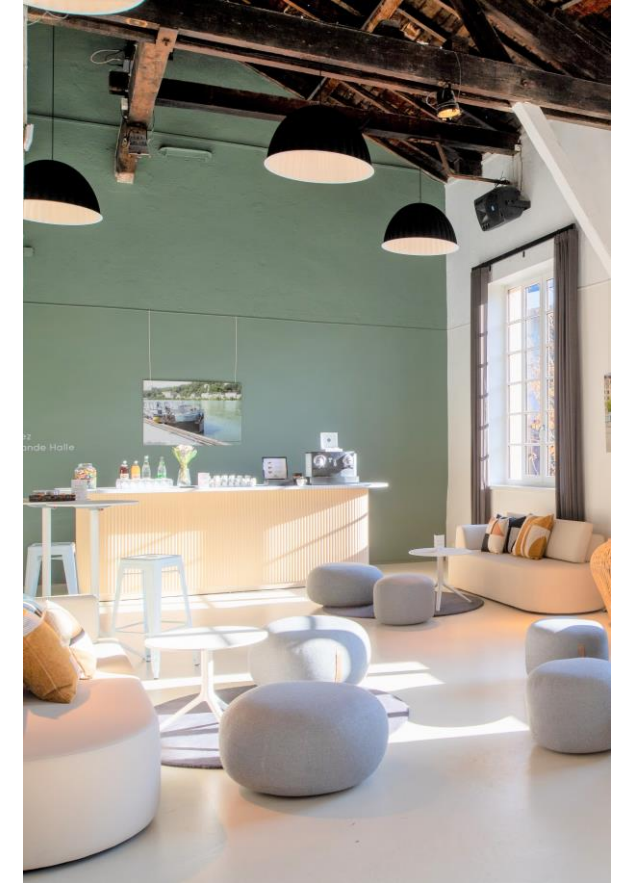
NATURAL LIGHT:

Join a sustainable approach by favoring a place where natural light is omnipresent and brings more well-being to visitors and participants. Live the Embarcadere experience with its XXL bays allowing a wide and growing collection of potted plants all over l'Embarcadère.



WWF SUSTAINABLE NEIGHBORHOOD:

Our district, Lyon Confluence is the first "WWF sustainable district" in France, thanks to support based on the "One Planet Living" approach. Part of this well-balanced ecosystem, l'Embarcadère overlooks a picturesque oasis-like valley and is sided by the Saône river : it's good to breathe!





— LIMIT CONSUMPTION

AN ECO-FRIENDLY BUILDING:

The devices of L'Embarcadère are entirely designed to make it an eco-friendly building.

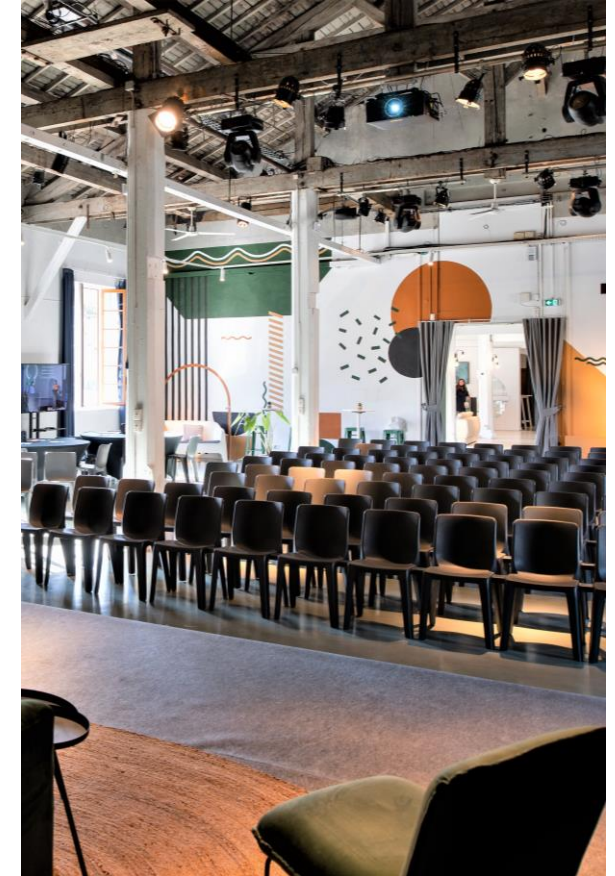


We are gradually converting the lighting in all of our spaces to low-consumption technologies (LED) and have presence detectors in each of the passageways.

We also work with a 100% renewable and French energy supplier.



For our caterers to limit the use of their refrigerated truck, a cold room is installed in one of the offices.





— REDUCE, SORT AND RECOVER WASTE

WASTE MANAGEMENT AND SORTING:



L'Embarcadère has set up a waste collection and sorting system: several selective sorting bins (organic waste / recyclables / capsules / glass) are in place in our offices and are equipped with explanatory signage to facilitate the task.



We sort 100% of the glass and cardboard used and recycle 100% of Nespresso capsules.





— REDUCE, SORT AND RECOVER WASTE

DRASTIC ON PLASTIC :



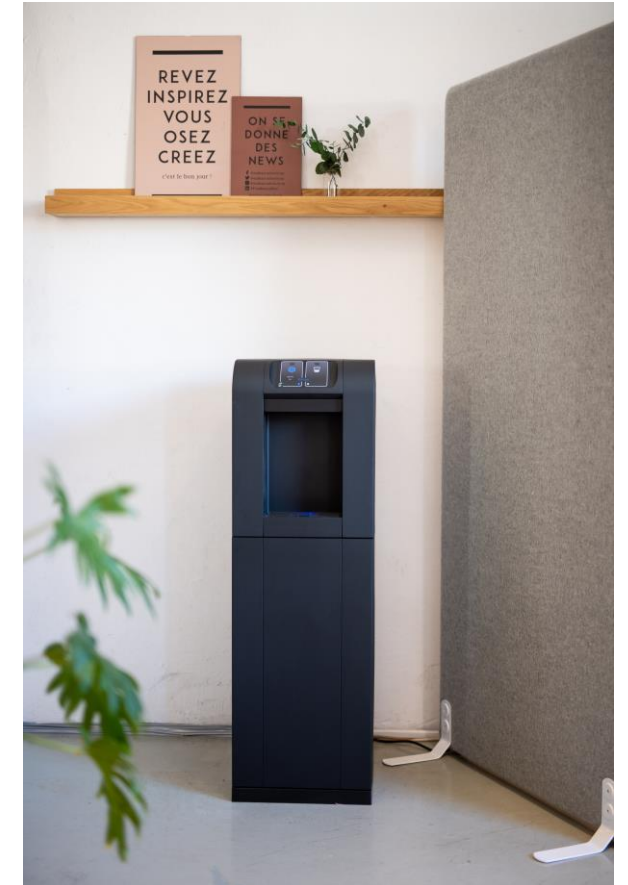
L'Embarcadère has always been equipped with glass/porcelain crockery for your receptions and coffee breaks: cups, glasses, dishes.



Since 2017 we no longer use balloon releases (balloon, helium, etc.) and plastic confetti in favor of paper/recyclable decorations.



Practical and ecological, your new water fountain blends into l'Escale room and reduces your consumption of bottled water.





— REDUCE, SORT AND RECOVER WASTE

CATERERS:

To offer solutions that are consistent with our eco-responsible approach, while meeting the variety of your needs, we present a selection of complementary catering partners. They are labeled ISO20121, Antigaspi, or Ethical Catering.

BIO

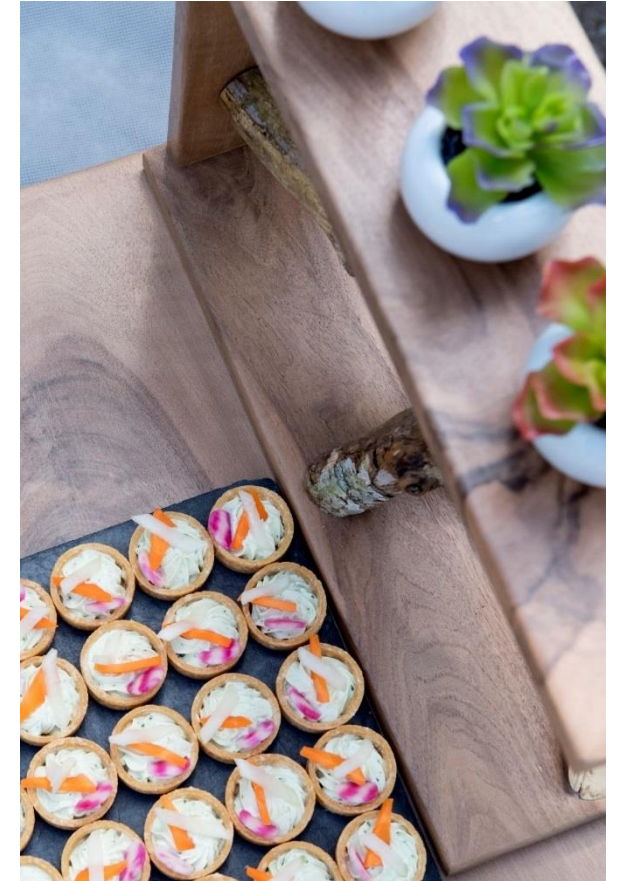


CATERING:

We work with local service providers who deliver shared meals that generate less waste than individual trays. Thanks to the delivery of eco-thought boxes, some of our caterers have also obtained the "Lyon, Fair and Sustainable City" label.

DIETS:

Do your guests have allergies, follow a vegetarian or gluten-free diet? Our caterers are committed and adapt their menu to your needs.





— ACT TOGETHER

NOISE :



L'Embarcadère is a member of the Charter for the quality of Lyon's nightlife. This label, created by the city of Lyon, commits its members to respecting public tranquility and preventing risky behavior. Respectful of our environment, we make every effort to limit nuisance during events.

ACCESSIBILITY:



All our spaces are accessible to people with reduced mobility. An access ramp and an elevator allow to move around freely in the spaces.





— ACT TOGETHER

Our commitment goes beyond the impact of the events hosted at L’Embarcadère. The eco-responsible approach is also supported internally by our team.

ECO RESPONSIBILITY IN OFFICES:

Optimal paper management:

- Digitization of our documents, double-sided printing, use of recycled paper, reuse of draft prints,
- Recycling of toners and implementation of sorting.
- Optimization of heating by installing thermostats and switching off electronic devices,



WELL-BEING:

Because the well-being of the team is at the center of our concerns, we choose a collaborative and transparent management.





— ACT TOGETHER

TEAMBUILDING:

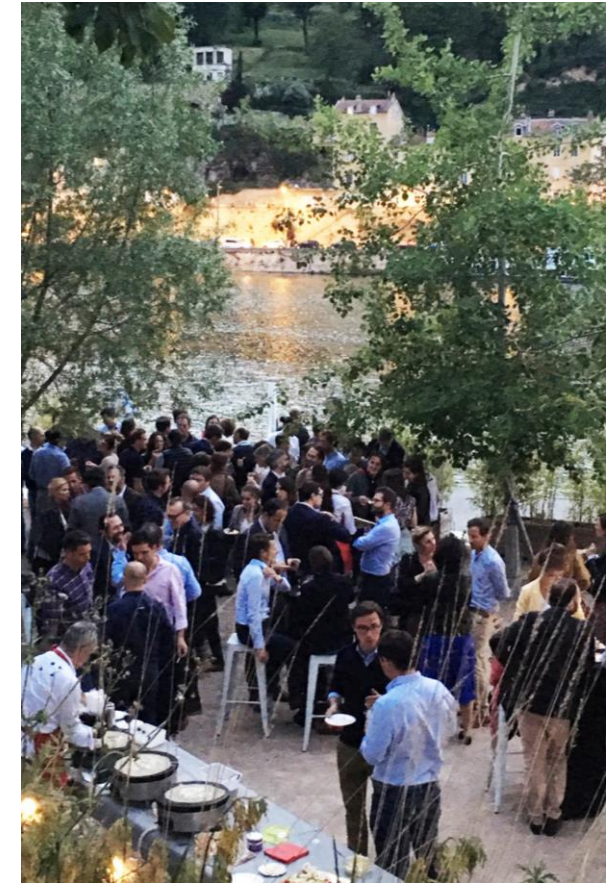


It is the team spirit that infuses L'Embarcadère with all its energy, we cultivate it through days that are dedicated to us. Brainstorming, sport, challenges, friendly moments. We are all fervent followers of team buildings!

SOFT MODES:



To favor soft modes, we lend 2 scooters to the team.





— COMMUNICATE ON SUSTAINABLE DEVELOPMENT ISSUES



The event is a great vehicle for raising awareness of environmental issues. This is why we have created a **Best Practices** booklet to support our client in eco-designing his event and communicating himself with his participants.



Responsible management of purchases - communication, goodies, service providers - or organization in accordance with CSR rules ! Quickly discover these Best Practices in the news of the Embarcadère.





— RESOLUTELY COMMITTED

Notre démarche RSE est une mobilisation sur le long terme.



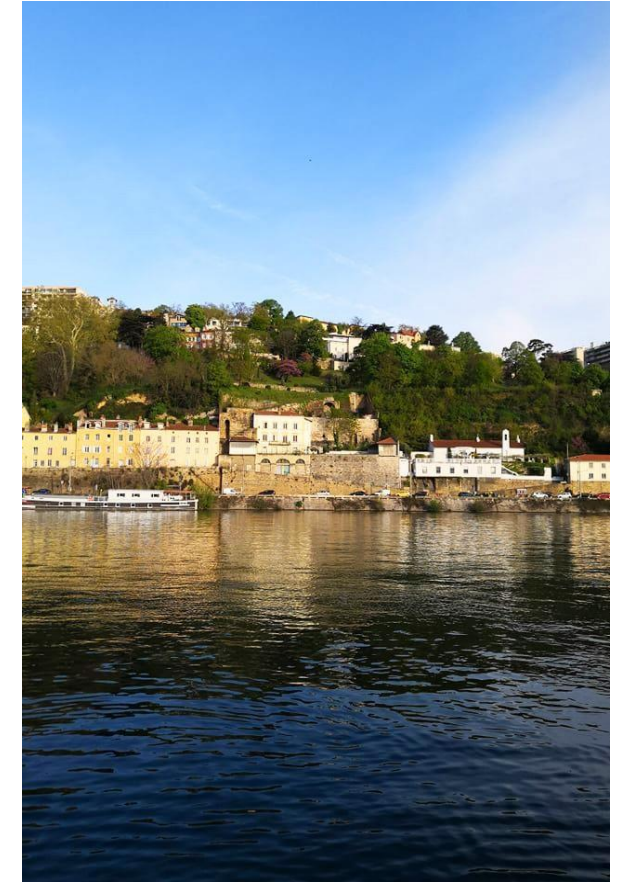
Our CSR approach is a long-term mobilization.

L'Embarcadère is committed to allocating human and financial resources each year to improve knowledge, information and action around sustainable development.



We wish to contribute at our scale, to the creation of low impact events and more generally in making L'Embarcadère a committed place with a strong CSR strategy.

The goal? Accompany you in the organization of your low impact events. Because we know that it is together that we will move the lines.



SEE YOU SOON !



13 bis Quai Rambaud, 69002 LYON

04 78 37 41 57

www.embarcadere-lyon.com

embarcadere@embarcadere-lyon.com

